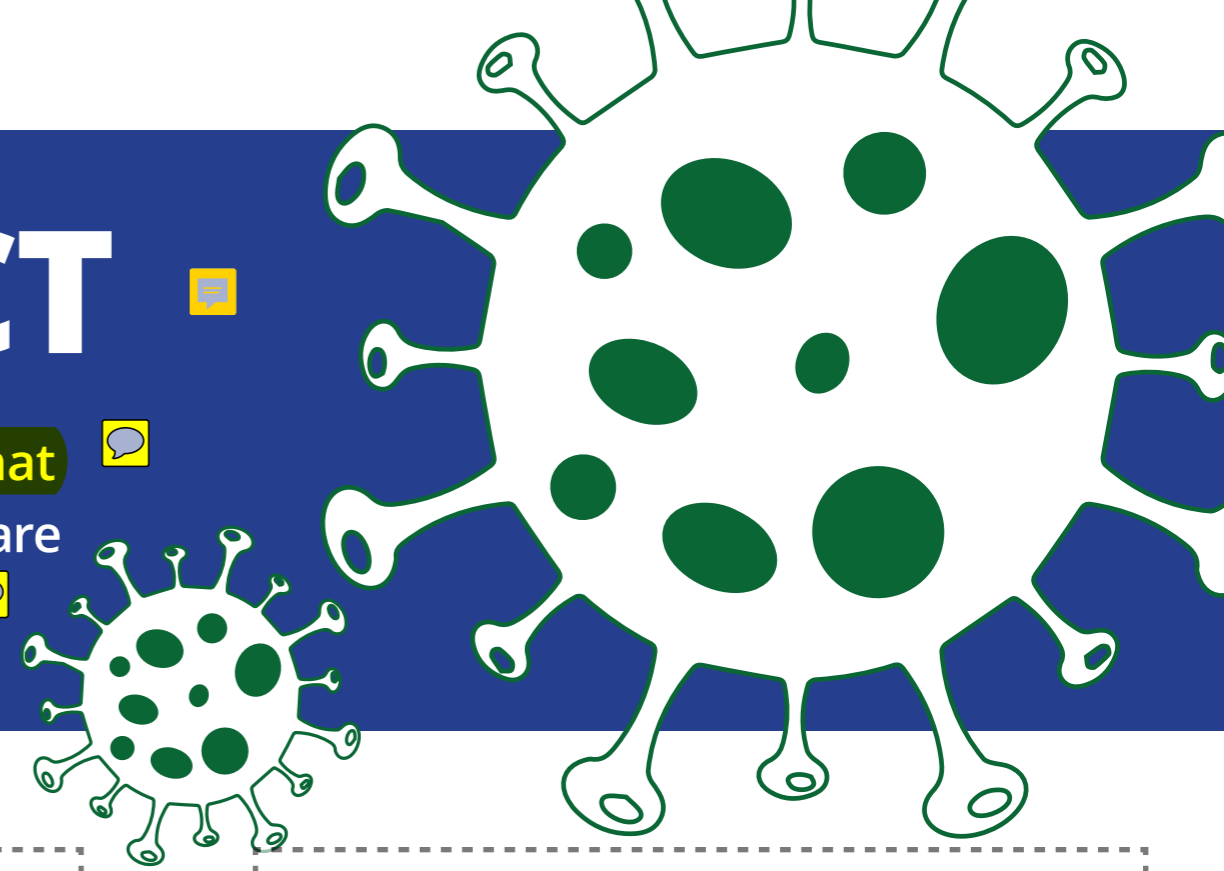
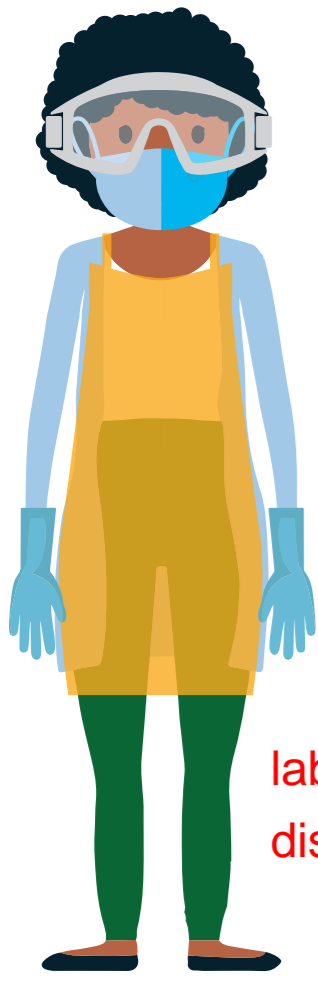


THE POWER TO PROTECT

Your safety and the safety of others **depends on more than the type of PPE that you wear.** Safe removal of PPE, hand hygiene and correct principles of **cleaning** are essential to minimise risk of self-contamination and transmission to others.





PPE

for high-risk wards (confirmed/suspected COVID-19 cases)

- Non-sterile gloves
- Visor or goggles
- Plastic apron
- **Surgical mask**

lab coats or front covering
disposable surgical gowns

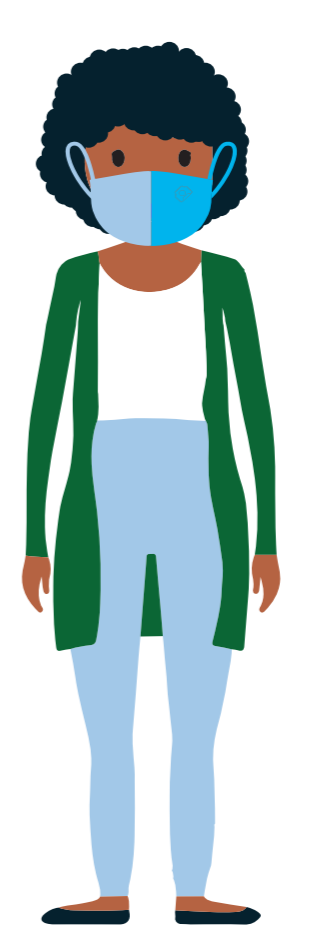


PPE

for aerosol-generating procedures in COVID-19 high risk wards

- Non-sterile gloves
- Visor or goggles
- Fluid-resistant apron **or** gown
- Well-fitted **N95 respirator** for aerosol-generating procedures only

e.g. Tracheal intubation, non-invasive ventilation and COVID-19 specimen collection, among others.



PPE

for COVID-19 low-risk areas

- Wear a surgical mask in the wards
- Wear a cloth mask in communal (non-clinical) areas
- **OTHER PPE IS NOT NEEDED if you are not in direct contact** with patients with confirmed/suspected COVID-19
- **Do NOT use PPE if not indicated - we have a global shortage**

This does not specify who will be wearing the PPE if the aim is to protect health care workers in high risk settings or procedures, i recommend an N95 mask and disposable gown

