

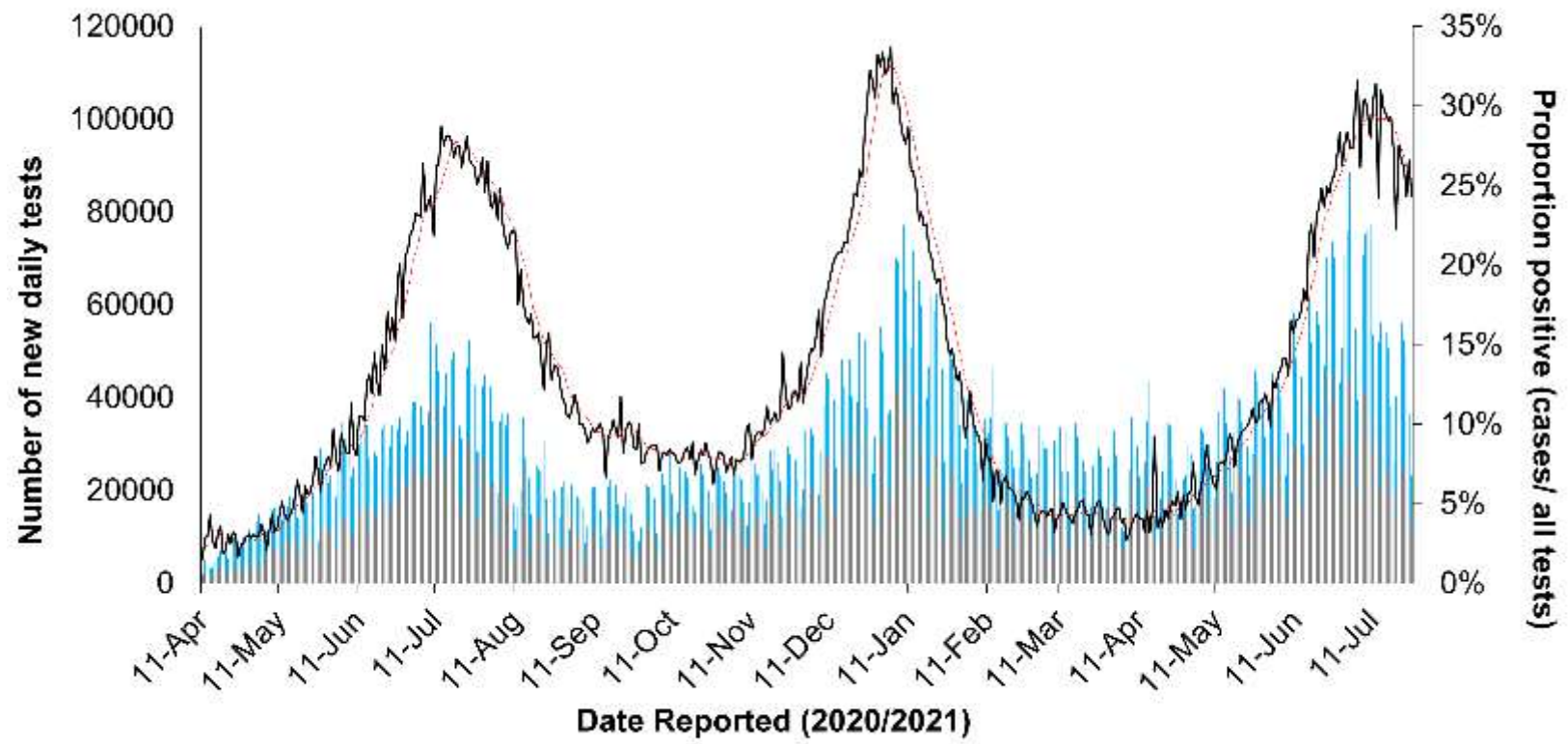
Epi Update

29 July 2021

Testing – PCR and antigen

29 July - 24,6% percent positivity

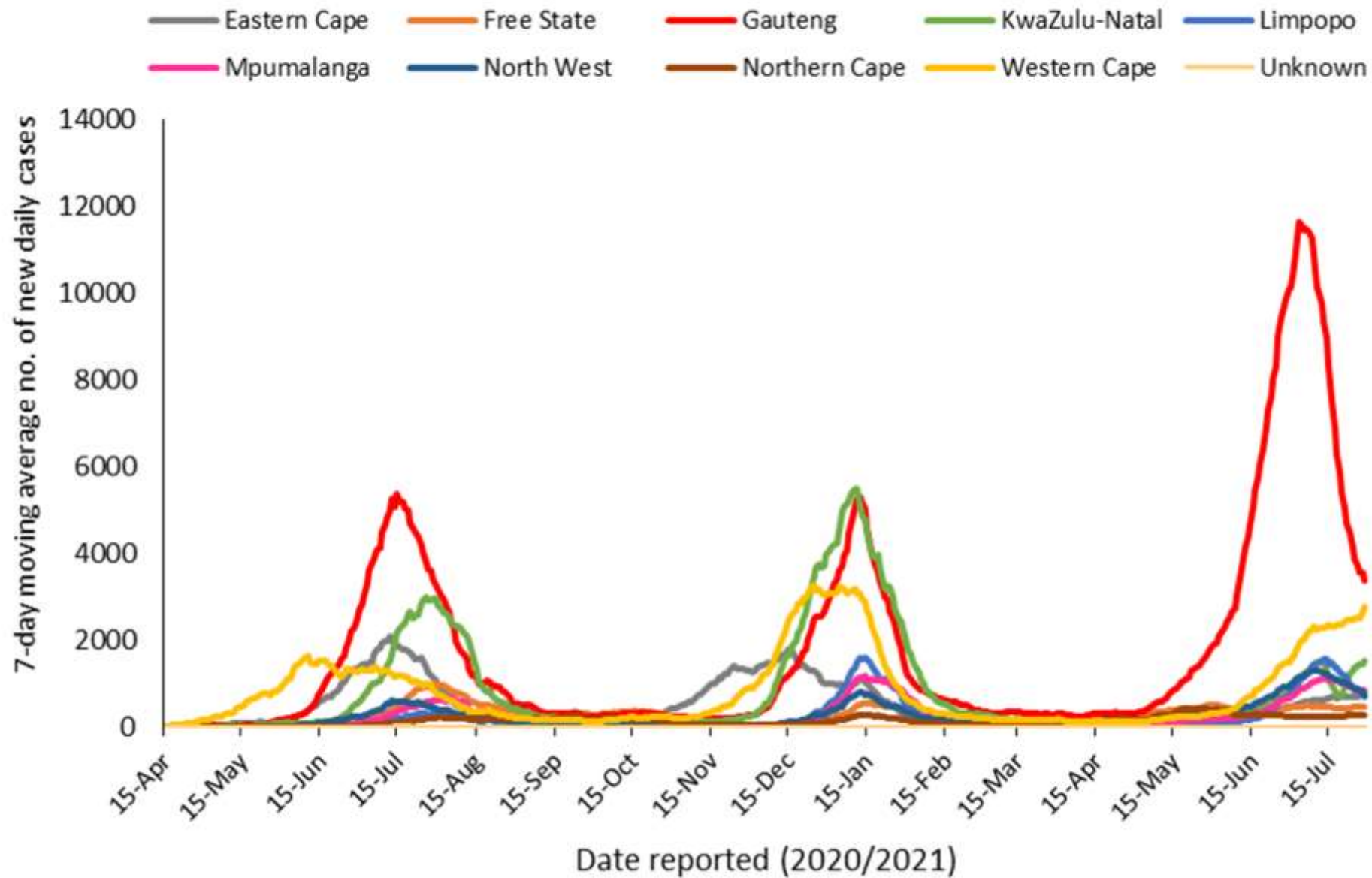
Week number	Week beginning	Percentage testing positive (%)
14	04-Apr-21	4.0
15	11-Apr-21	4.8
16	18-Apr-21	5.1
17	25-Apr-21	5.8
18	02-May-21	6.9
19	09-May-21	8.3
20	16-May-21	9.8
21	23-May-21	11.4
22	30-May-21	13.4
23	06-Jun-21	17.7
24	13-Jun-21	23.8
25	20-Jun-21	27.4
26	27-Jun-21	30.0
27	04-Jul-21	32.1
28	11-Jul-21	32.0
29	18-Jul-21	28.7



■ Private lab tests ■ Public lab tests — Proportion + (cases/ all tests) 7-day moving average proportion+ -

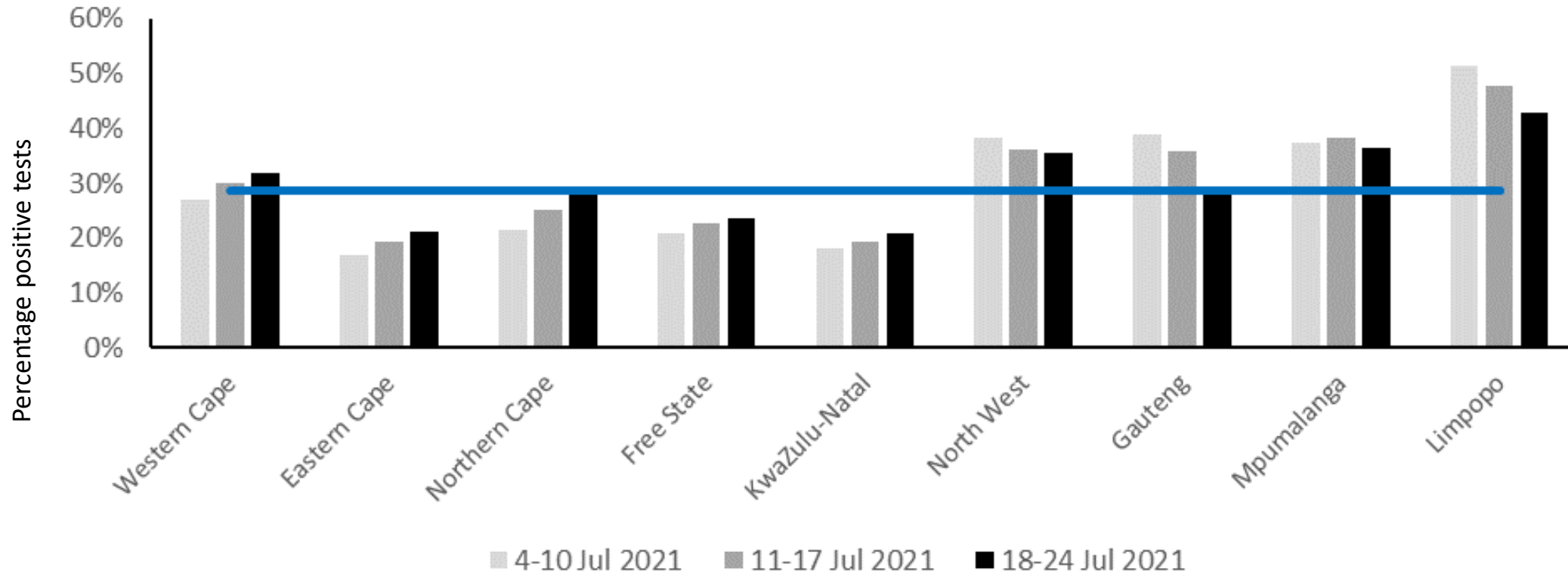
Number of new daily tests for SARS-CoV-2 and proportion positive by date of reporting and health sector, and 7-day moving average proportion positive, 6 April 2020 to date, South Africa

The percentage testing positive in week 29 of 2021 was 28.7%, which was 3.3% lower than the previous week (32.0%, P<0.001)



7-day moving average number of new cases by province and date of reporting, 12 April 2020 to date, South Africa

Weekly percentage testing positive



- Percentage testing positive in week 29 was highest Limpopo (42.7%), Mpumalanga (36.4%), North West (35.4%), and Western Cape (31.9%) provinces
- Increased in the Western Cape, Eastern Cape, Northern Cape and KwaZulu-Natal provinces.
- Decreased in Gauteng, Mpumalanga and Limpopo and remained unchanged in the North West and the Free State.

Previous 14 days and current 14 days average COVID-19 admissions and deaths and percentage changes, South Africa, 26 June-24 July 2021

Province	Hospital admissions		Percentage change in admissions	Hospital deaths		Percentage change in deaths
	Previous 14 days admissions average	Current 14 days admissions average		Previous 14 days deaths average	Current 14 days deaths average	
Eastern Cape	72.21	83.21	15.23	16.79	26.93	60.43
Free State	70.93	64.93	-8.46	16.64	18.71	12.45
Gauteng	904.07	627.21	-30.62	217.36	194.71	-10.42
KwaZulu-Natal	153.86	146.79	-4.60	20.93	34.64	65.53
Limpopo	123.07	106.36	-13.58	26.14	37.43	43.17
Mpumalanga	81.07	79.29	-2.20	16.07	22.79	41.78
North West	135.43	121.71	-10.13	25.00	28.43	13.71
Northern Cape	26.93	25.79	-4.24	6.64	7.36	10.75
Western Cape	312.64	393.79	25.95	51.57	82.00	59.00

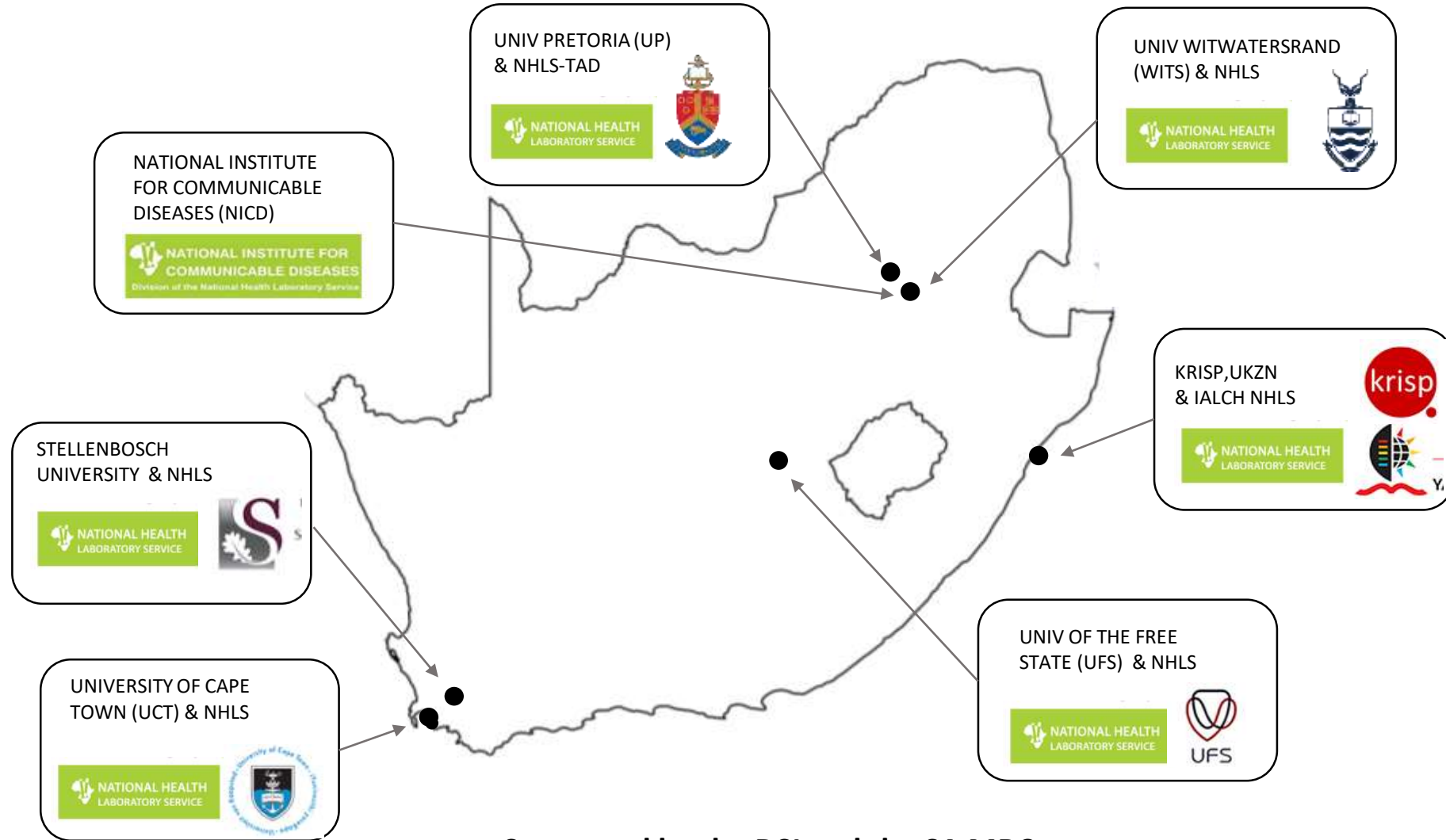
NGS-SA SARS-CoV-2 Sequencing Update

29 July 2021

Network for Genomic Surveillance South Africa (NGS-SA)



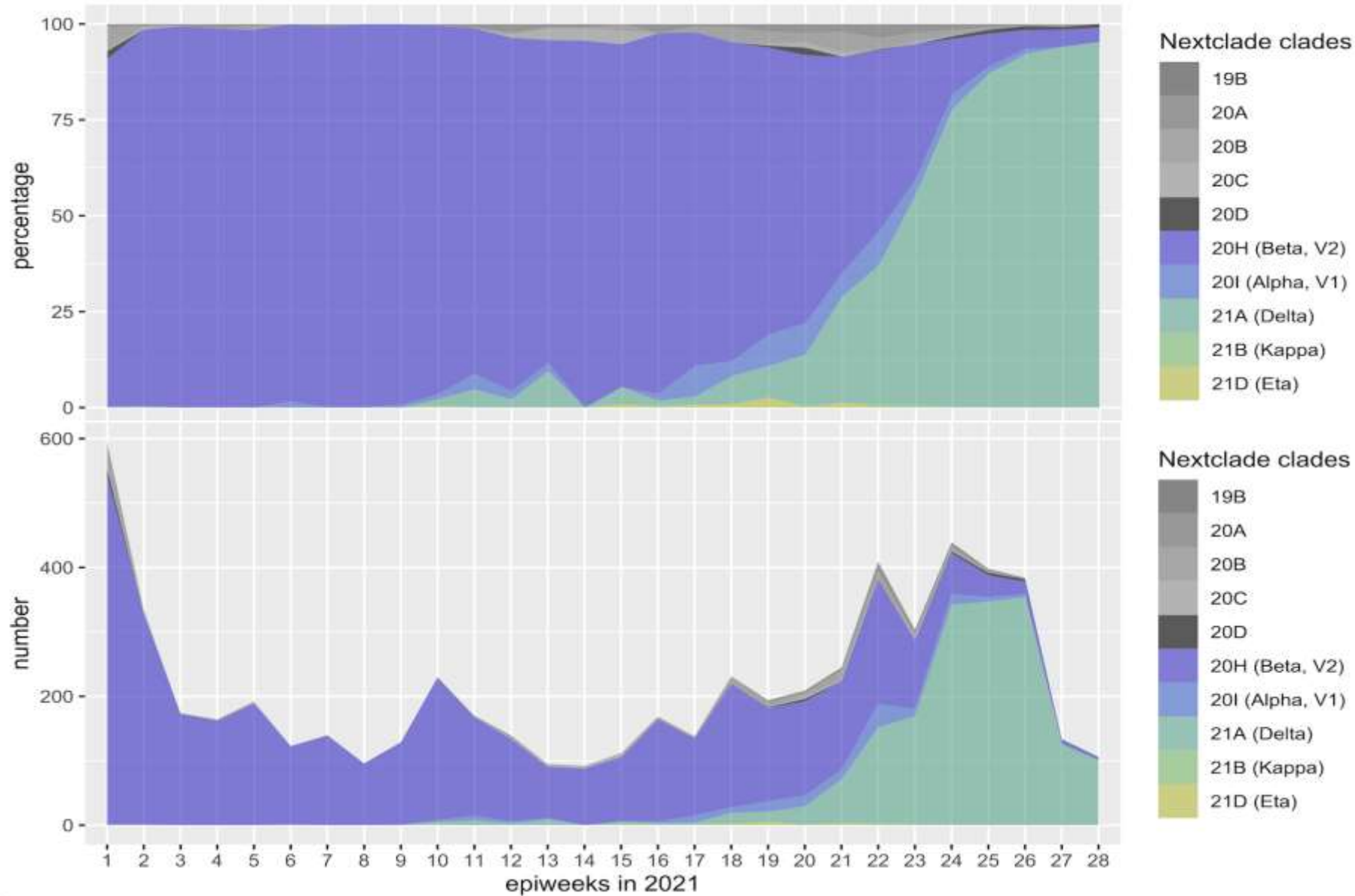
Network for Genomic Surveillance in South Africa (NGS-SA)



Supported by the DSI and the SA MRC

Msomi N, Mlisana K, et al. Lancet Microbe 2020

Distribution and number of clades in South Africa, 2021 (N=6 631)



Sequencing data ending epi week 28 (ending 17 July 2021)

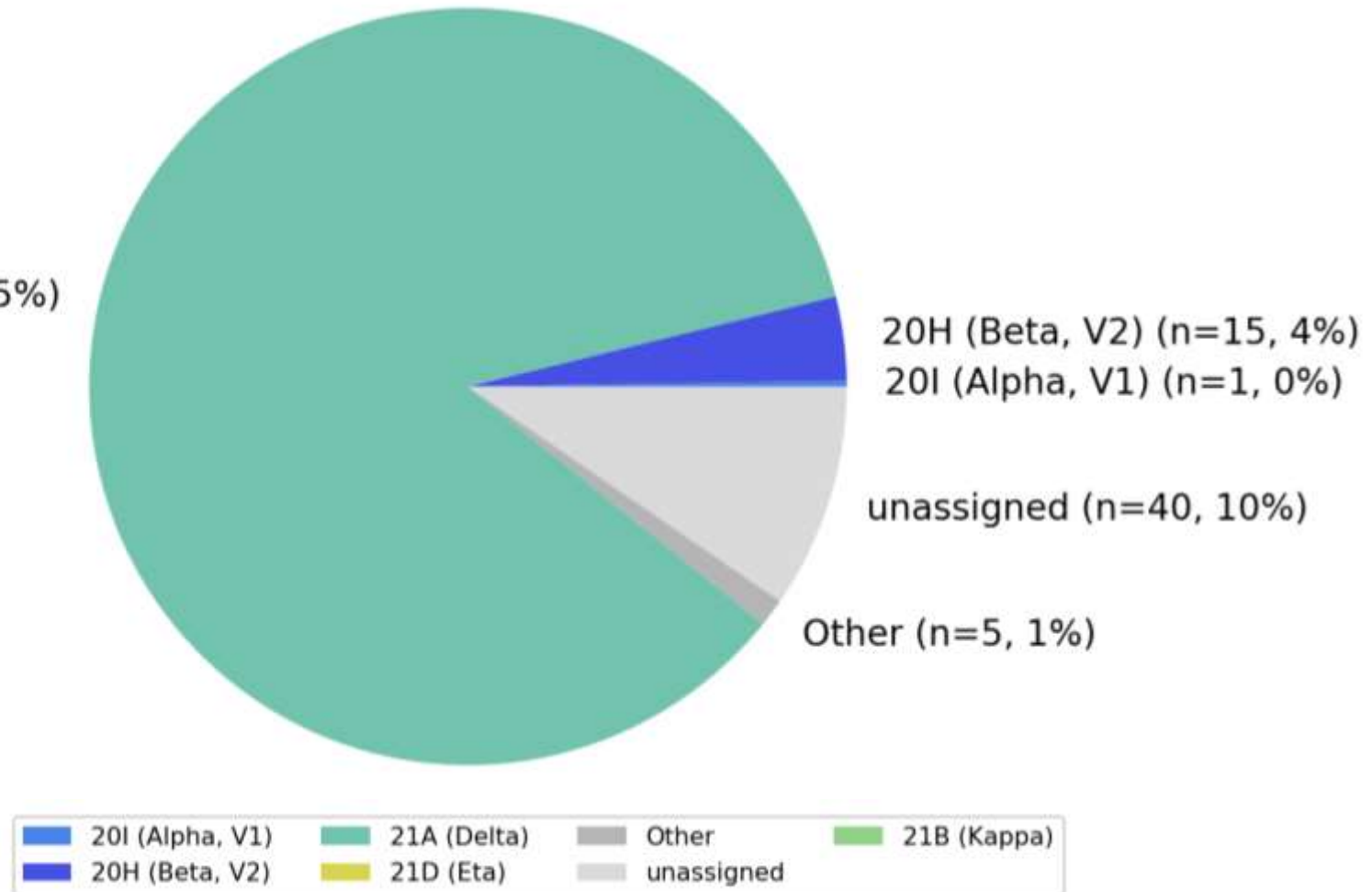
Currently in epi week 30 (ending 31 July 2021)

Alpha, Delta and Eta variant frequency increasing as of the beginning of May (epi-week 18, 2 May). Delta becoming dominant by end of June (340/439, 77% in week 24; 347/398, 87% in week 25; 354/384, 92% in week 26; 126/134, 94% in week 27 – excluding unassigned sequences)

Prevalence of Variants of Concern (VOC) and Variants of Interest (VOI) in July 2021 sequences, South Africa (N=417)

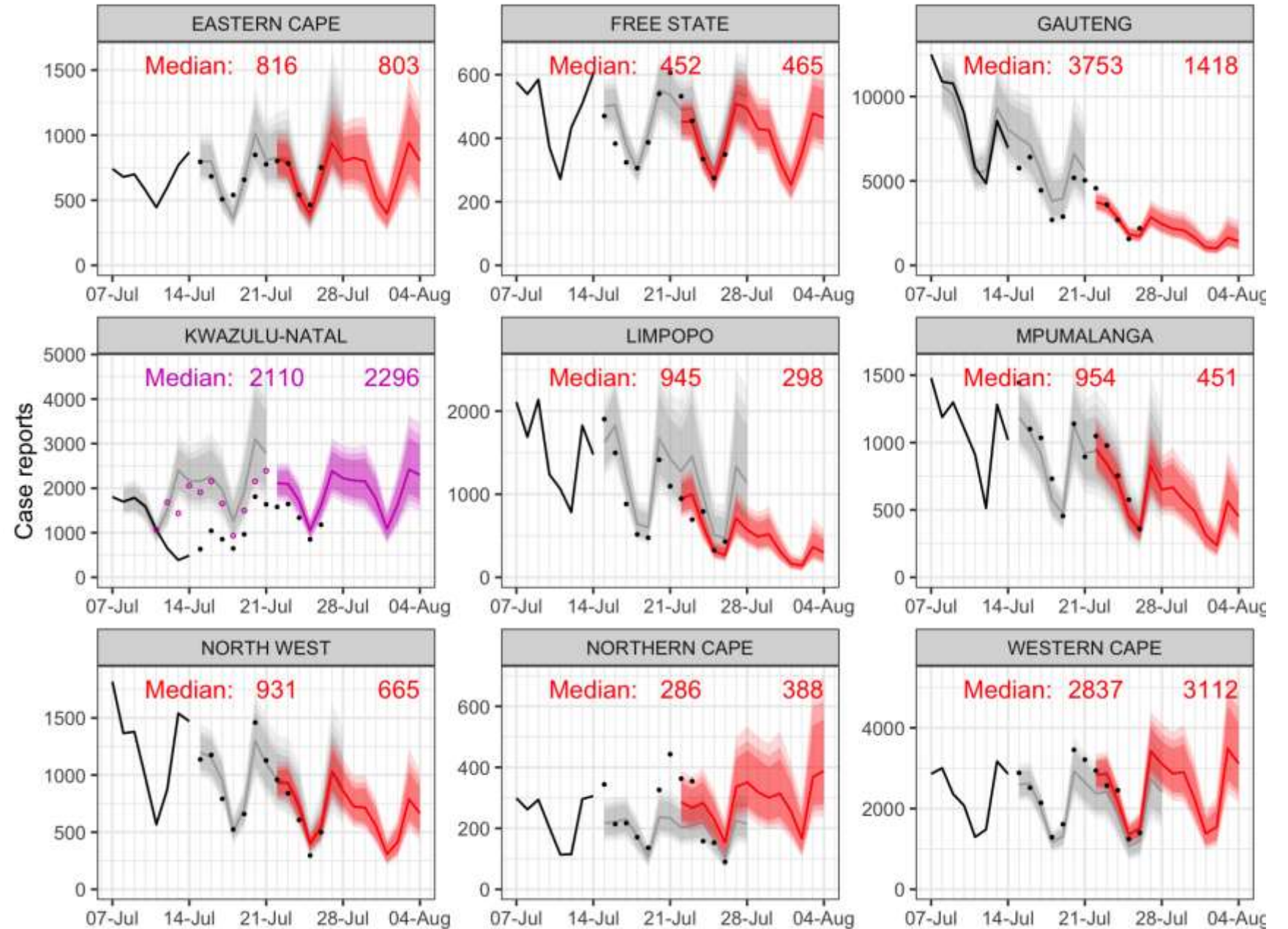
- 89% of sequences are from a VOC (Beta, Delta)
- Greater than 10%
 - Delta variant now dominates (85%)
- Less than 10%
 - Beta (4%)
 - Alpha (0.2%)
- No other VOCs or VOIs detected yet.
- More high quality data is required to establish variant dominance and diversity

21A (Delta) (n=356, 85%)



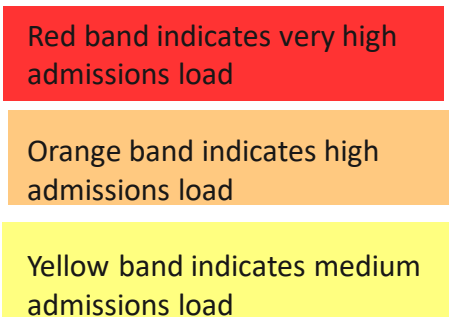
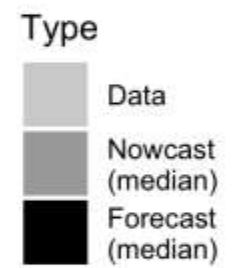
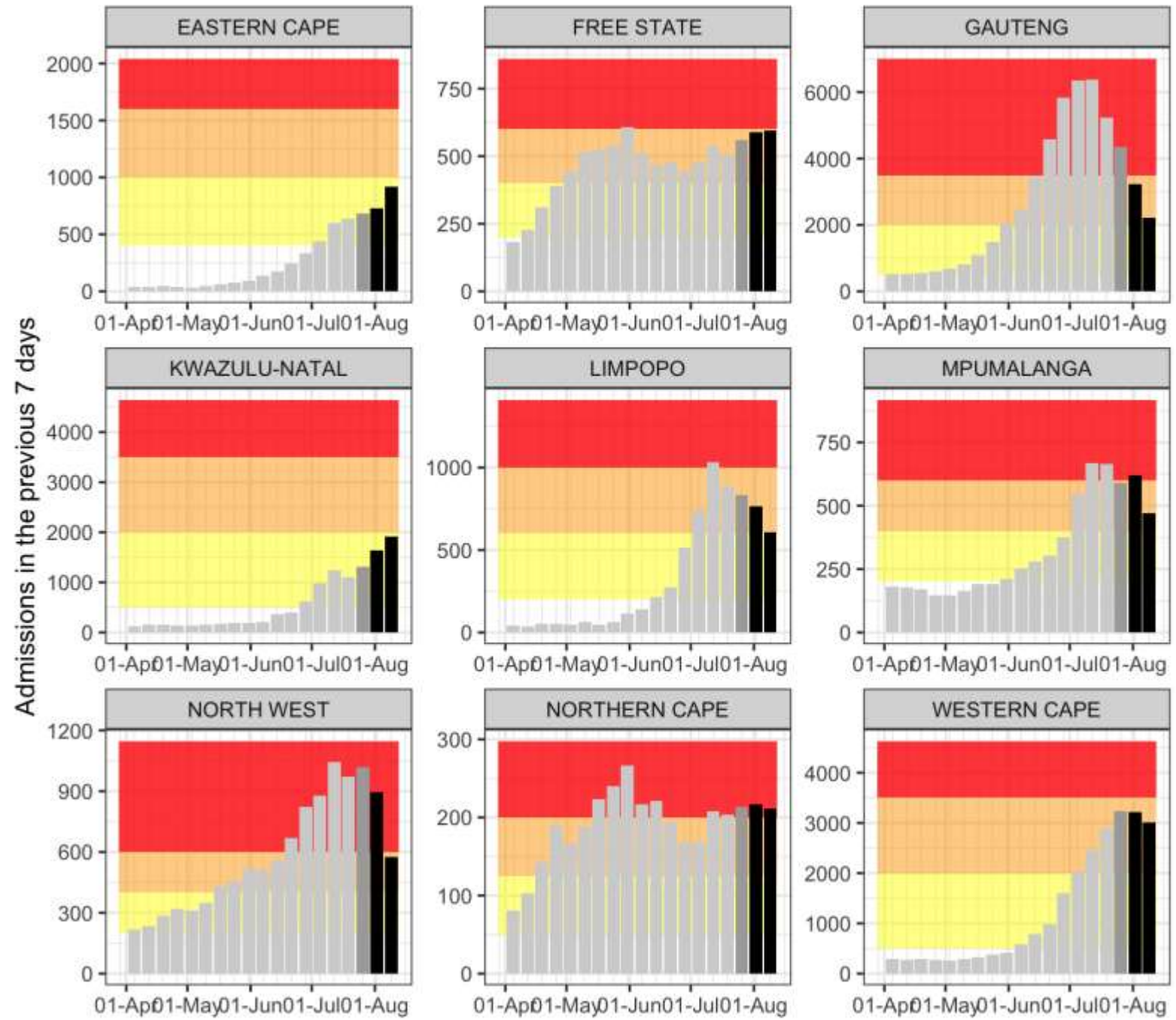
Delta variant appears to dominate in July in South Africa so far, but more high quality sequence data is required to confirm this

Daily new cases forecast



Red text indicates median at the beginning and end of the most recent forecast period

Weekly hospital admissions forecast



Summary

- Nationally, continue to see decreases in case numbers and number of tests over past week
- Percent testing positive decreasing nationally – GP, MP, LP decreasing but increases in WC, EC, NC, KZN
- GP – decreasing incidence, % positive, hospitalisations
- WC and KZN – need to monitor closely
- Delta variant remains dominant